

Professional Surveillance System User's Manual

Content

Welcome.....	4
1 Feature.....	5
2 Installation	6
2.1 Environment.....	6
2.2 Installation.....	6
2.3 Un-installation.....	8
3 Main Window	9
3.1 Interface	9
3.2 Device Operation	9
3.2.1 Device Management.....	10
3.3 Color Setting.....	12
3.4 PTZ	13
3.4.1 Direction key and 3D positioning key.....	13
3.4.2 Speed	13
3.4.3 Zoom/Focus/Iris.....	13
3.4.4 Auto scan.....	14
3.4.5 Pattern.....	14
3.4.6 Preset.....	15
3.4.7 Auto tour	15
3.5 Plan Management.....	15
3.5.1 Add Small Plan	16
3.5.2 Add Large Plan	17
4 Five Function Keys	20
4.1 Real-time Monitor Operation.....	20
4.1.1 Network Connection.....	20
4.1.2 Switch between Preview Mode and Real-time Monitor Mode	20
4.1.3 Real-time monitor window	20
4.2 Record.....	21
4.2.1 Search.....	22
4.2.2 Download.....	22
4.2.3 Playback	22
4.3 Device.....	23
4.3.1 Information.....	23
4.3.2 Configuration.....	24
4.3.3 Upgrade	29
4.3.4 Control Record.....	30
4.4 System.....	30
4.4.1 Local record.....	30
4.4.2 Local User Manager.....	31
4.4.3 System log.....	31
4.4.4 Change Language.....	32
4.4.5 About	32
4.5 E-map	33
4.5.1 Add an e-map	33

4.5.2	Remove an E-map	34
4.5.3	Modify an E-map	34
4.5.4	E-map Operation	34
4.5.5	Device Operation.....	35
4.5.6	Open Device	35
4.5.7	Multiple E-maps Operation	35
4.5.8	Multiple Sub-e-maps Setup	36
5	Appendix.....	37

Welcome

Thank you for using multiple-client!

This operating manual is designed to be a reference tool for the installation and operation of your system.

Here you can find information about this multiple-client feature and functions.

1 Feature

Multiple-client has the following features:

- Manage devices conveniently
- Support multiple-device connection, real-time surveillance and playback
- Device management, log review and user management
- PTZ control and device alarm, video record
- Support multiple-device upgrade simultaneously

2 Installation

2.1 Environment

We recommend the following configuration:

- Hardware
 - ✧ CPU P4 2.0G
 - ✧ Display card: support hardware zoom such as ATI,TNT2 PRO. We recommend ATI9800 or above dual channel. 128M/128bit
 - ✧ Network card: 100M
- Software

For client end we recommend Windows 2000 or Windows XP.

2.2 Installation

Double click General_Video Management Server-Professional icon, the image is shown as in Figure 2-1.

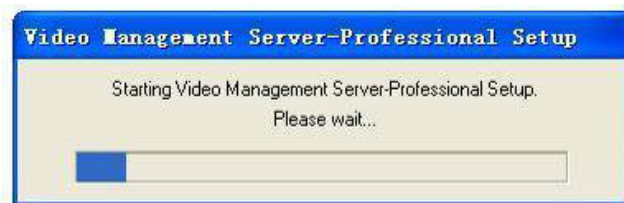


Figure 2-1 Start

Then the welcome interface pops up. See Figure 2-2.

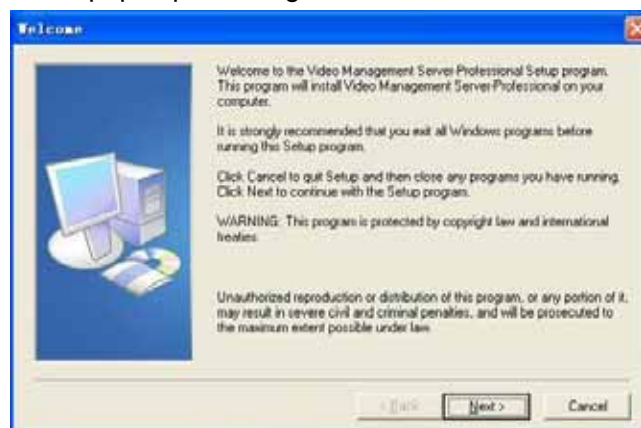


Figure 2-2 Welcome

Click next to continue. The following image will appear. See Figure 2-3.



Figure 2-3 Select program folder

Click next to continue, the following image will pop up. See Figure 2-4.

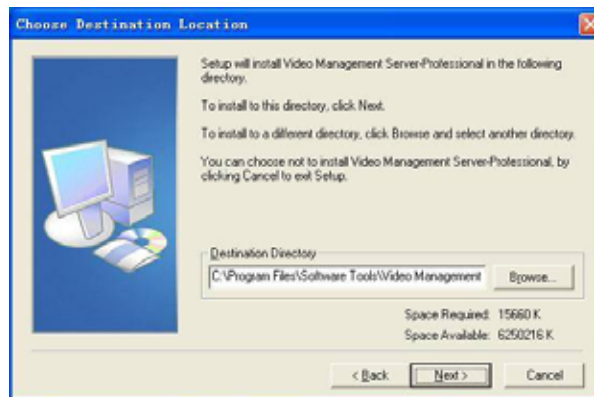


Figure 2-4 Choose destination location

Please specify the location for installation and then click next to continue. The image is shown as in Figure 2-5.

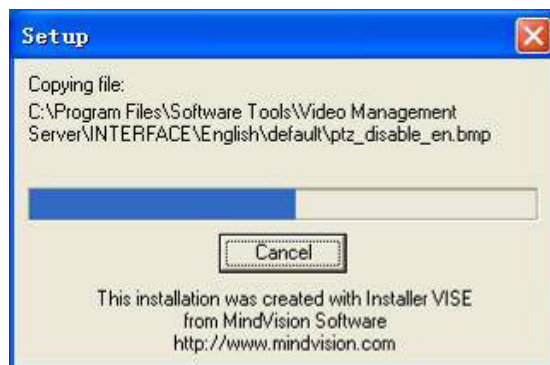


Figure 2-5 Installation progress

After installation, you will see a window as appears in Figure 2-6.

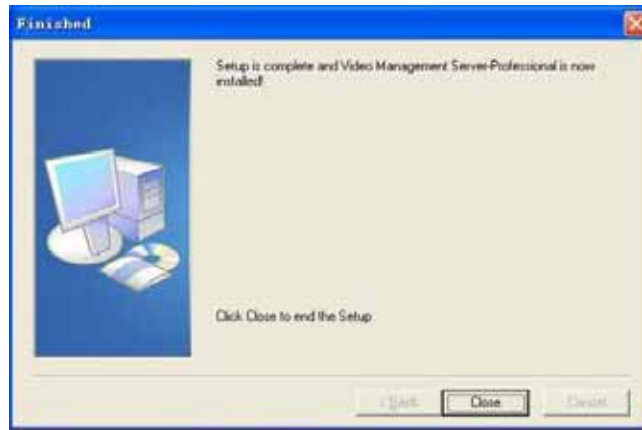


Figure 2-6 Complete installation

Please click close button to complete installation.

You can see multiple-client icon is in the desktop now. See Figure 2-7.



Figure 2-7 System Icon

2.3 Un-installation

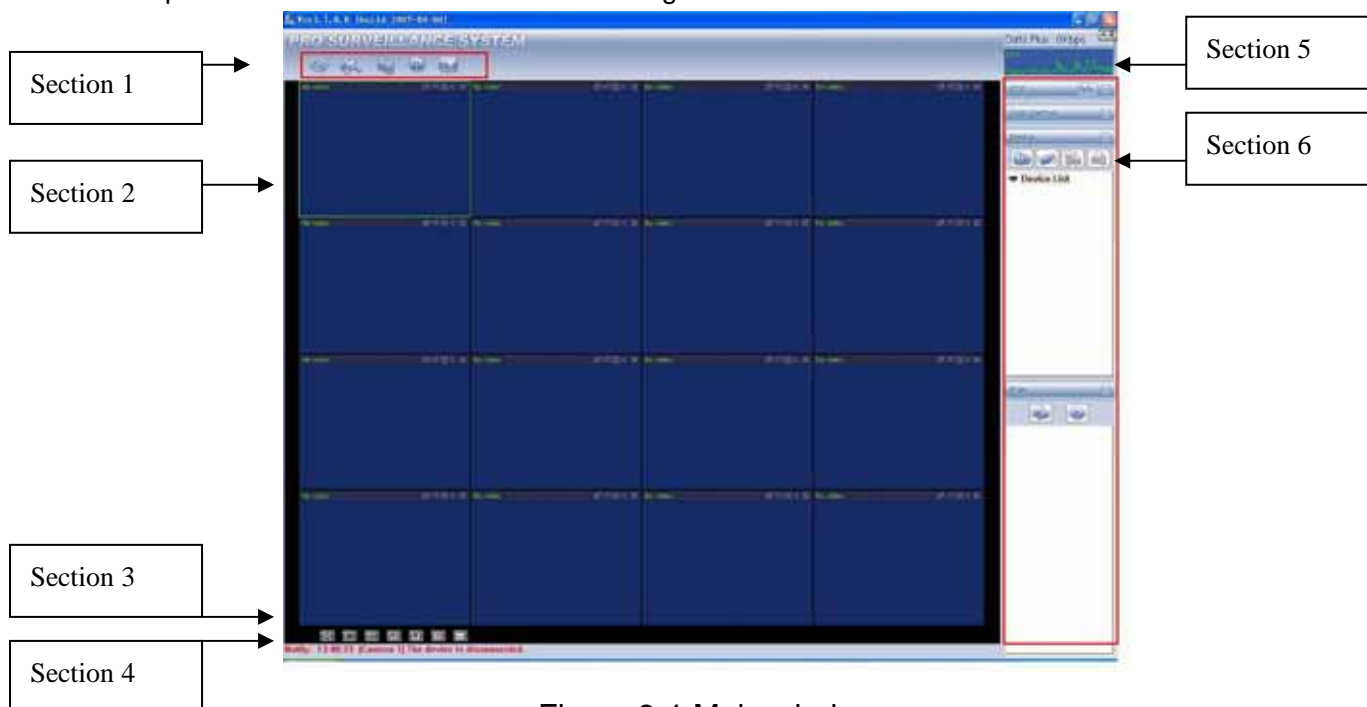
There are two ways for you to uninstall multiple-client.

- From start to program then select video management server. Please right click mouse and select un-installation.
- From start to control panel and then select add or remove program. Select video management server and select un-installation.

3 Main Window

3.1 Interface

Multiple-client main window is shown as in Figure 3-1.

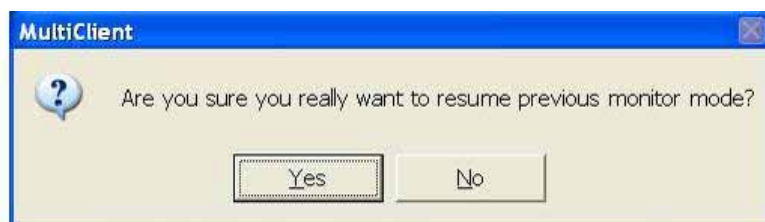


There are totally six sections:

- Section 1: There are five function keys: monitor, record, device, system and e-map. Please refer to chapter four for detailed information.
- Section 2: Here is for you to view channel video.
- Section 3: Here is for you to select display mode. System supports the following display modes: full-screen /single window/four-window/six-window/eight-window/nine-window/sixteen-window.
- Section 4: Here is for you to view current help information.
- Section 5: Here is to display data flux and CPU status.
- Section 6: There are four function buttons: PTZ/Color setting/Device/Plan. Please refer to chapter three for detailed information.

If you have logged in before, system pops up the following interface. See Figure 3-2.

Click Yes button system goes back to previous monitor mode.



When you first enter, you need to go to 3.2 device interface to add new device.

3.2 Device Operation

In Figure 3-1, click device button (in section 6) , the image is shown as in Figure 3-3.

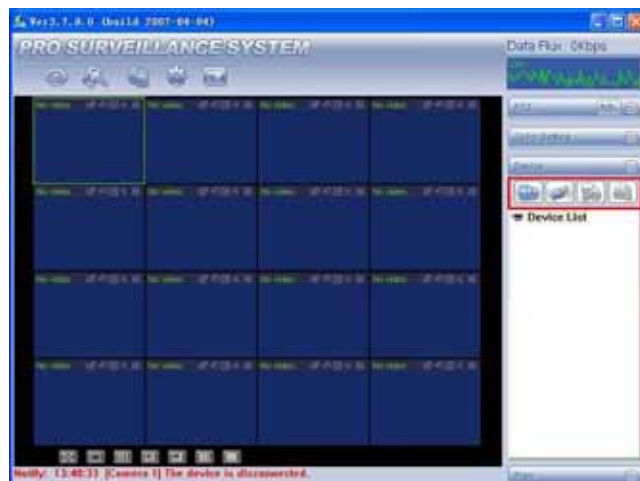


Figure 3-3 Device interface

There are four function keys. See Figure 3-4.

- 1. Device Management: Here is for you to add new user.
- 2. Connect/Disconnect: Select a device and then click this button to connect (disconnect) with network.
- 3. Reboot: select a device and then click this button to reboot.
- 4. Talk: select a connected device and then click this button to begin remote audio talk.



Figure 3-4 Device function keys

3.2.1 Device Management

In Figure 3-3, click device management button (Button 1 in Figure 3-4), the image is shown as below. See Figure 3-5.

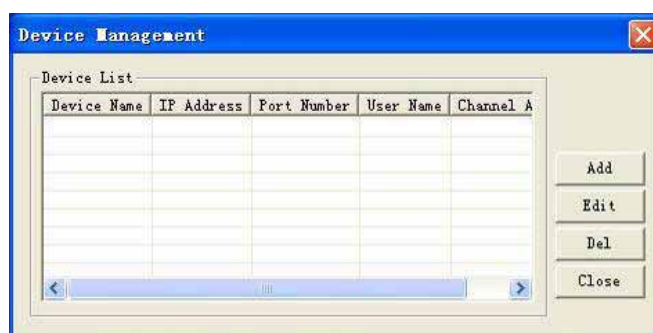


Figure 3-5 Device management

Click add button, you can see the following interface for you to add new device. See Figure 3-6. Please input device name (such as DVR), IP address, user name, password and port number (Default 37777)
Click save button and then click close to exit.

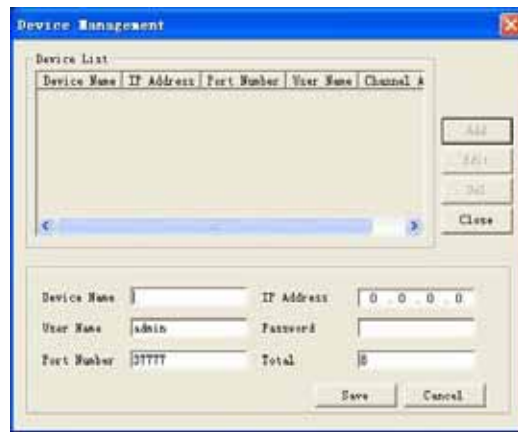


Figure 3-6 Add new device

After you added a new device, you can see below the device list, there is a newly added device DVR.

You can see the red font below the interface says this device is disconnected. See Figure 3-7.

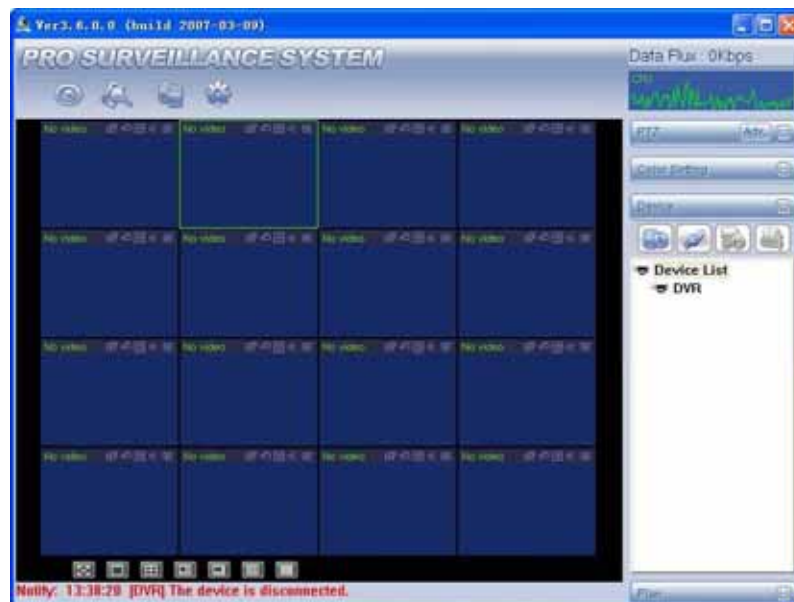


Figure 3-7

In Figure 3-7, click connection/disconnection button, you can see the red font below the interface says this device is connected. See Figure 3-8.



Figure 3-8

Click one window on you left side and then double click channel name on you right hand, you can see the corresponding video in current window.

You can click display icons below the screen to switch between various display modes(section 3 in Figure 3-1). See Figure 3-9.

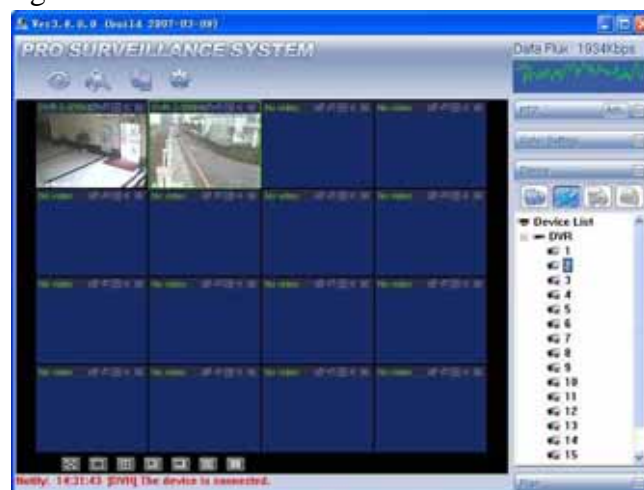


Figure 3-9

3.3 Color Setting

Click color setting button, the image is shown as Figure 3-10.

Here you can select one channel and then adjust its brightness, contrast, hue and saturation. (Current channel border becomes green).

Or you can click default button to use system default setup.



Figure 3-10 Color setting

3.4 PTZ

Before PTZ operation, please make sure you have properly set PTZ protocol (Refer to 4.3.2 .9 Device-Pan/Tilt/Zoom).

Click PTZ button, the image is shown as in Figure 3-11 .

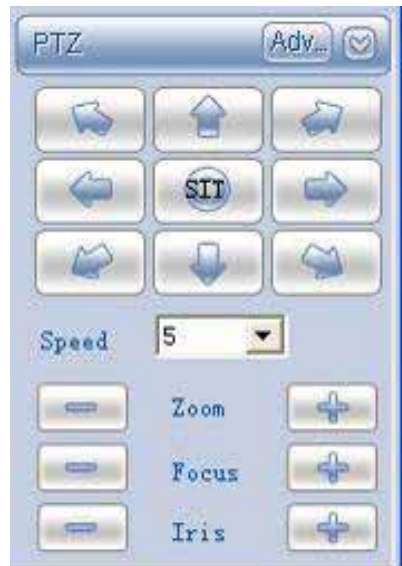


Figure 3-11 PTZ interface

3.4.1 Direction key and 3D positioning key

In Figure 3-11, there are eight direction keys.

In the middle of the eight direction keys, there is a 3D intelligent positioning key.

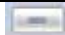

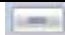

Click SIT button, system goes back to the single screen mode. Drag the mouse in the screen to adjust section size. It can realize PTZ automatically.

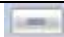

3.4.2 Speed

System supports eight-level speed. You can select from the dropdown list. Speed 2 is faster than speed 1.

3.4.3 Zoom/Focus/Iris

Here is a sheet for you reference.

Name	Function key	Function	Function key	Function
Zoom		Near		Far
Focus		Near		Far

Iris		close		Open
------	---	-------	---	------

Then click advance button, you can see the following interface. See Figure 3-12.



Figure 3-12 Advance

Click setup, you can see the following interface. See Figure 3-13.

3.4.4 Auto scan

In Figure 3-13, move the camera to you desired location and then click left limit button. Then move the camera again and then click right limit button to set a right limit.

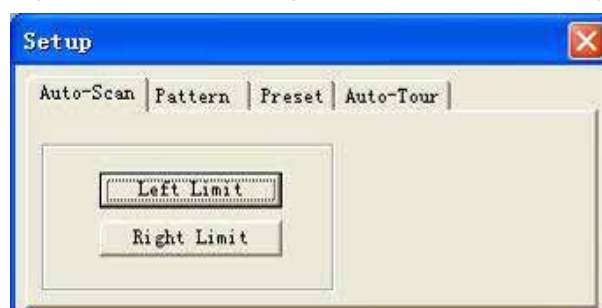


Figure 3-13 Auto-scan

3.4.5 Pattern

Click patter button, you can see the following interface .see Figure 3-14.

You can input pattern value and then click start button to begin PTZ movement.

System goes back to figure 3-12.

After you finished camera operation, please go to figure 3-14 to click stop.

Now you have set one pattern.

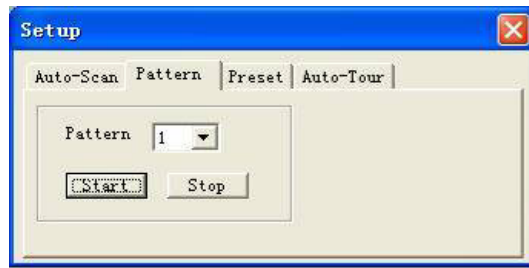


Figure 3-14 Pattern

3.4.6 Preset

Click preset button, the image is shown as below. See Figure 3-15.

Move the camera to your desired location and then input preset value. Click add button, you have set one preset.



Figure 3-15 Preset

3.4.7 Auto tour

Click auto tour button, the image is shown as below. See Figure 3-16.

You can input auto tour value and preset value. Click add button, you have added one preset in the tour.

Repeat the above procedure you can add more presets in one tour.

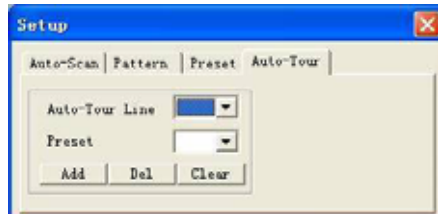


Figure 3-16 Auto tour

3.5 Plan Management

Click plan management button, you can see the following interface. See Figure 3-17.

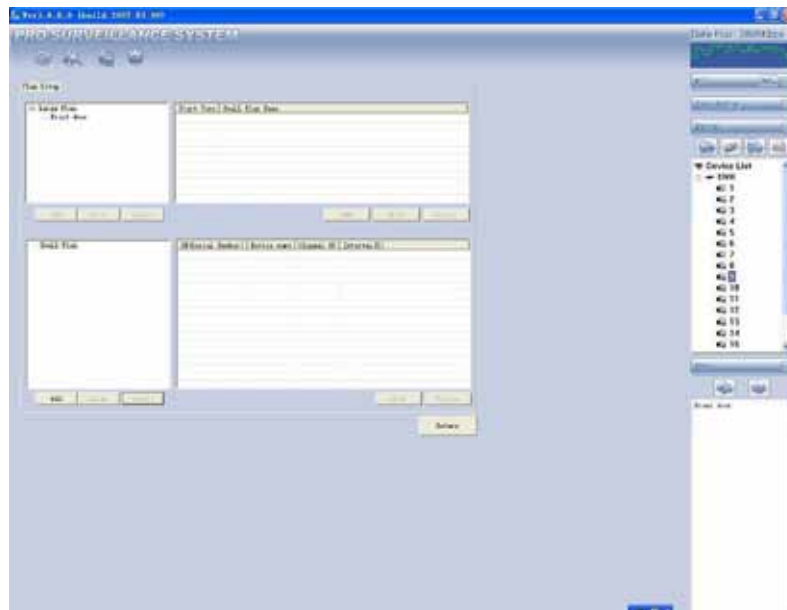


Figure 3-17 Plan management

3.5.1 Add Small Plan

Click add button, system pops up the following interface. See Figure 3-18.

You can input small plan name and window amount (select from the dropdown list)

Click OK to add one small plan.

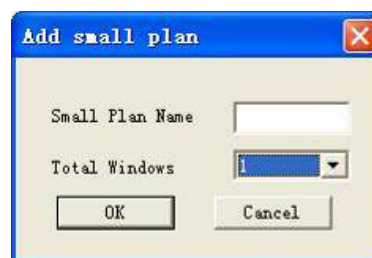


Figure 3-18 Small plan

Click + icon before the channel name, you can view the newly added four channels.

Click device channel on you left side and then click channel number on you right side.

System pops up dialogue box for you to set interval.

See Figure 3-19.

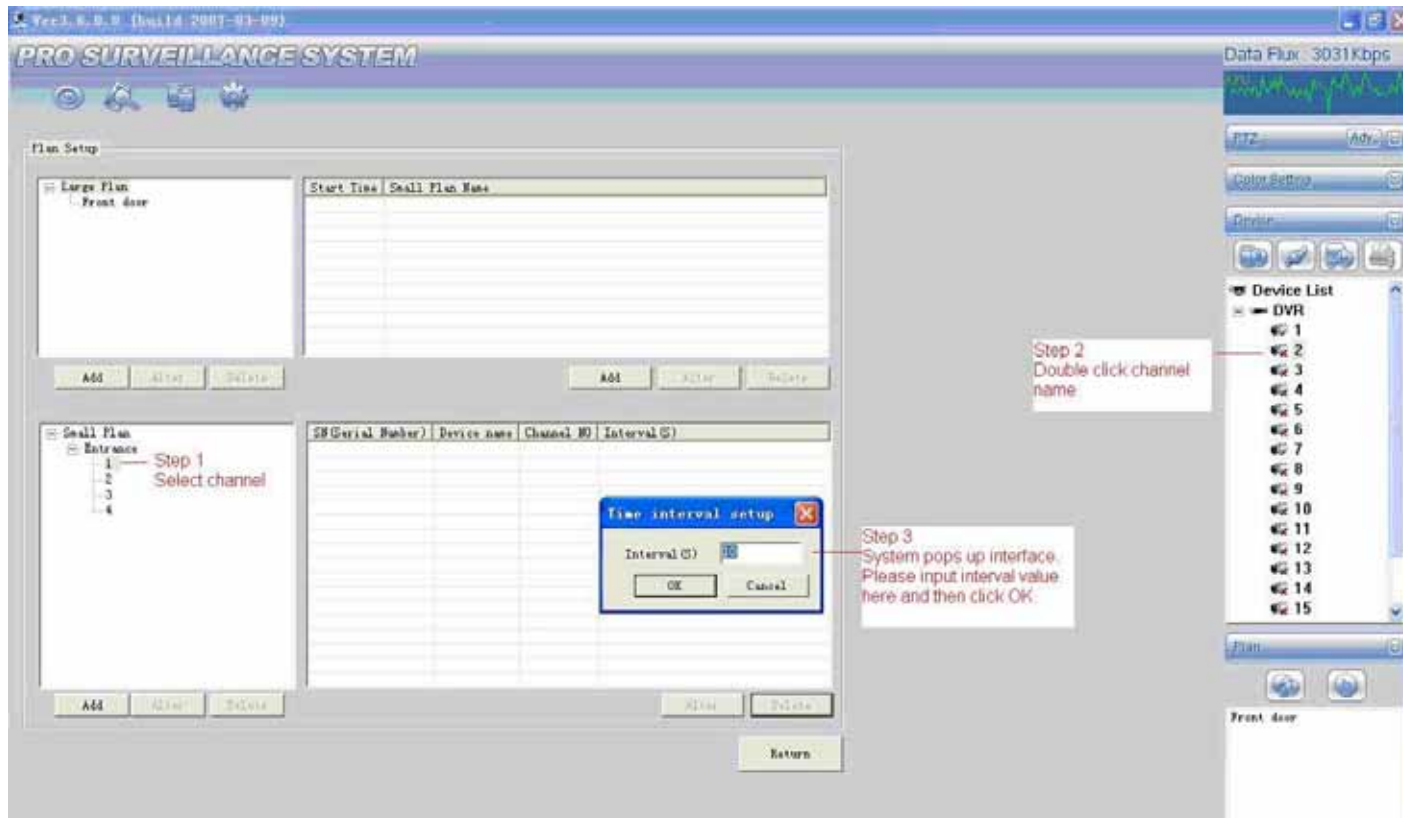


Figure 3-19 Interval

Now you can see there is a new small plan. See Figure 3-20. You can repeat the above steps to add more small plans.

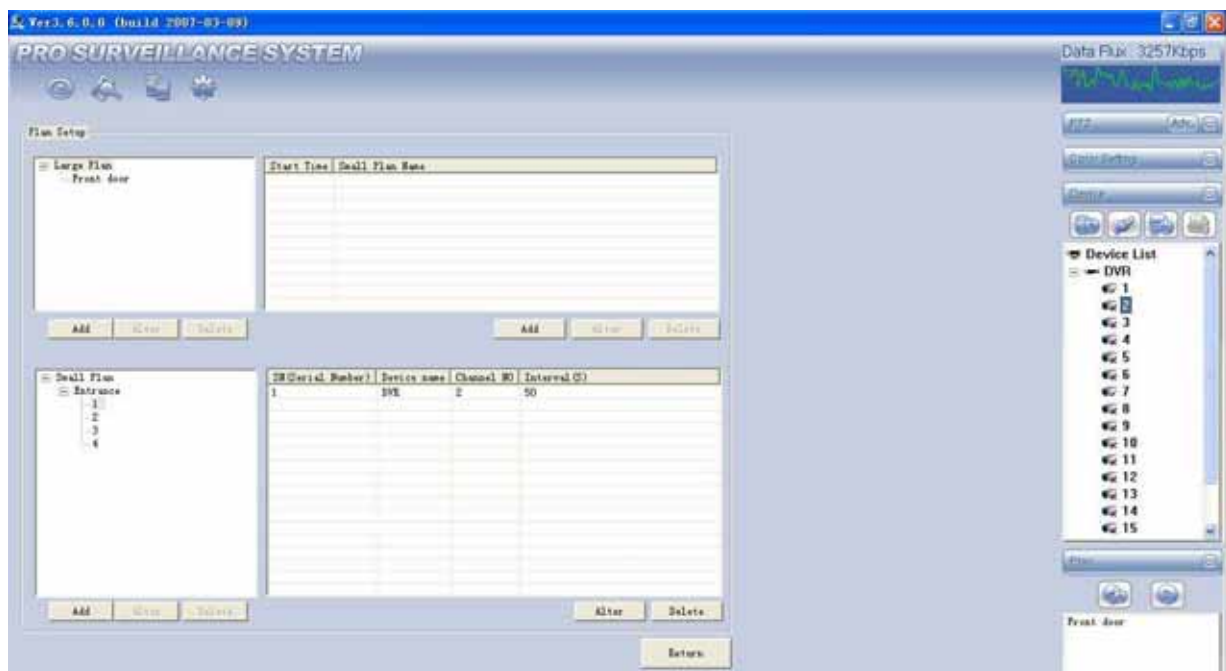


Figure 3-20 Small Plan

3.5.2 Add Large Plan

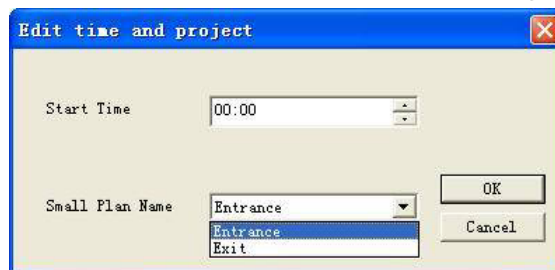
In Figure 3-20, click add button below large plan column. System pops up the following interface. You can input large plan name. See Figure 3-21.



A dialog box titled "Add Large Plan" with a close button (X) in the top right corner. It contains a text input field labeled "Large Plan Name" and two buttons: "OK" and "Cancel".

Figure 3-21 Add large plan

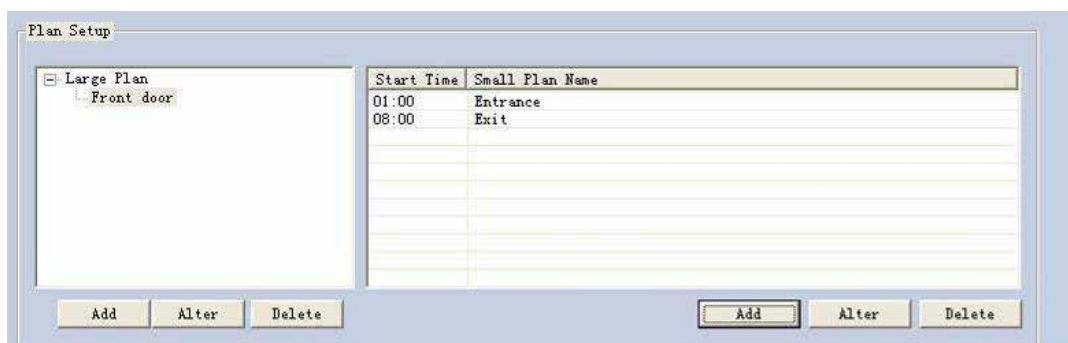
Click add button, system pops up the following interface. See Figure 3-22. Input start time and select corresponding small plan name from the dropdown list. Click OK button, you can see system has added a new large plan. You can repeat the above steps to add other small plans into this big plan.



A dialog box titled "Edit time and project" with a close button (X) in the top right corner. It contains a "Start Time" field with a time picker set to "00:00", a "Small Plan Name" dropdown menu with "Entrance" selected and "Exit" visible in the list, and "OK" and "Cancel" buttons.

Figure 3-22 Time

In Figure 3-23, you can see a large plan front door consists of two small plans: Entrance and Exit.



A window titled "Plan Setup" showing a tree view on the left with "Large Plan" expanded and "Front door" selected. On the right is a table with two columns: "Start Time" and "Small Plan Name". The table contains two rows: "01:00" for "Entrance" and "08:00" for "Exit". At the bottom are two sets of buttons: "Add", "Alter", and "Delete" for the tree view, and "Add", "Alter", and "Delete" for the table.

Start Time	Small Plan Name
01:00	Entrance
08:00	Exit

Figure 3-23 Large plan

After you created a large plan, you can click plan name and then click start to enable a large plan. See Figure 3-24.



Figure 3-24

4 Five Function Keys

4.1 Real-time Monitor Operation

In real-time monitor mode, you can operate the following functions.

4.1.1 Network Connection

Select a device name and then click connect/disconnect button, you can connect current device to network. You can see a little red -cross below the name disappeared.

Click one window on you left side and then double click channel name on you right hand, you can see the corresponding video in current window.

Please refer to Figure 4-1 for connection/disconnection information.

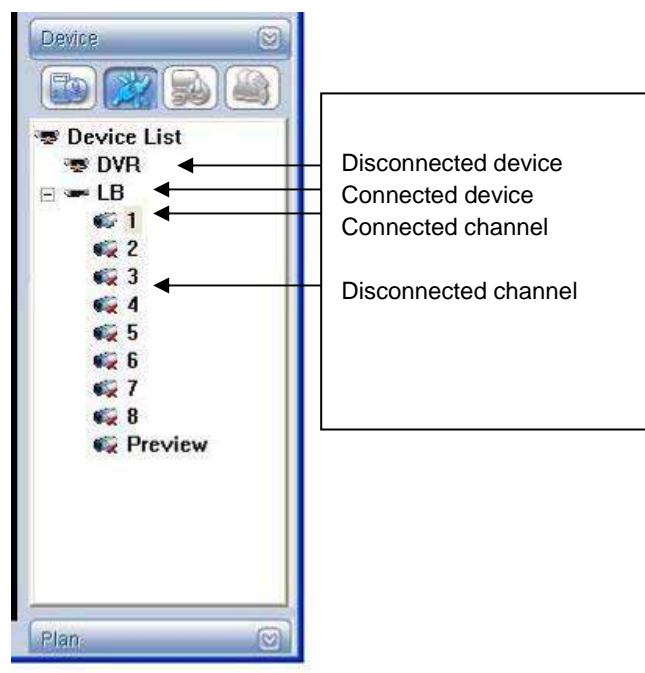


Figure 4-1 Connection/Disconnection

4.1.2 Switch between Preview Mode and Real-time Monitor Mode

You can click preview button to view total channels in one window.

System pops up the following interface. See Figure 4-2.

Right click one video in the preview mode you can view current channel real-time monitor data.

Right click again system goes back to multiple-screen preview mode.

You can draw a before the check box to disable this interface when you enter the next time.

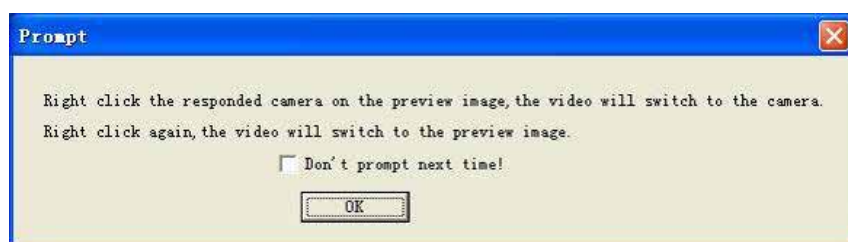


Figure 4-2 Prompt

4.1.3 Real-time monitor window

In video window interface, you can see there are device name on the top left corner. And there are five function keys on the top right corner. See Figure 4-3.



Figure 4-3 Real-time monitor

For detailed function key information, please refer to Figure 4-4.

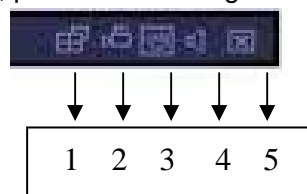


Figure 4-4

- 1: Switch display mode: resize or switch to full screen mode.
- 2: Local record. When you click local record button, the system begins recording and this button becomes highlighted. You can go to system -.local record to set video file path.
- 3: Capture picture. You can snapshot important video. All images are memorized in system client folder \download\picture (default).
- 4: Audio :Turn on or off audio.(It has no relationship with system audio setup)
- 5: Close video.

4.2 Record

Click record button, the image is shown as below. See Figure 4-5.

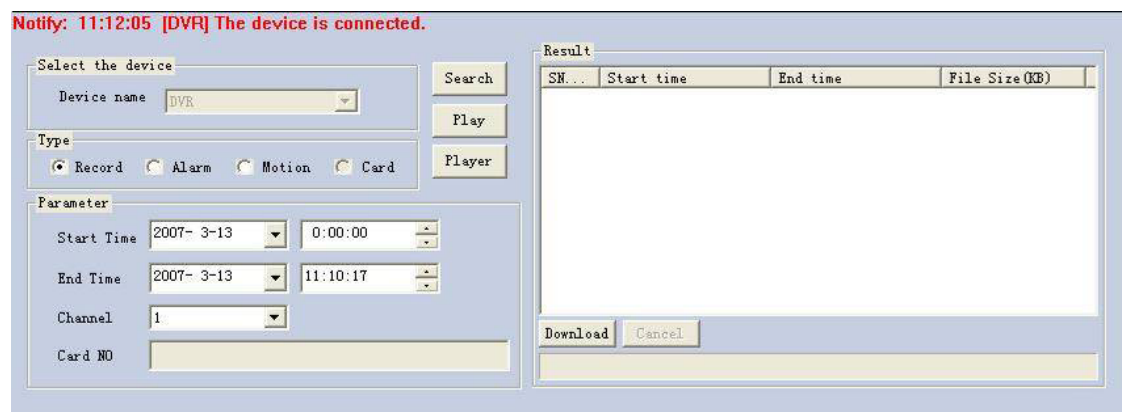


Figure 4-5 Record

4.2.1 Search

In Figure 4-5 you can select file type, start time/end time, device name and corresponding channel, then click search button you can see result on you right side. See Figure 4-6.

Notify: 16:27:40 [DVR] The device is connected.

The screenshot shows a search interface with the following components:

- Select the device:** Device name dropdown set to 'DVR'.
- Type:** Radio buttons for Record (selected), Alarm, Motion, and Card.
- Parameter:**
 - Start Time: 2007-3-11 0:00:00
 - End Time: 2007-3-12 16:25:35
 - Channel: 1
 - Card NO: (empty)
- Buttons:** Search, Play, and Player.
- Result Table:** A table with columns SN, Start time, End time, and File Size (KB). It contains 12 rows of search results.
- Buttons:** Download and Cancel.

SN...	Start time	End time	File Size (KB)
1	2007-03-12 05:00:00	2007-03-12 06:00:00	440119
2	2007-03-12 06:00:00	2007-03-12 06:46:15	339267
3	2007-03-12 06:46:15	2007-03-12 07:00:00	100945
4	2007-03-12 07:00:00	2007-03-12 08:00:00	440050
5	2007-03-12 08:00:00	2007-03-12 09:00:00	440140
6	2007-03-12 09:00:00	2007-03-12 10:00:00	440198
7	2007-03-12 10:00:00	2007-03-12 11:00:00	440093
8	2007-03-12 11:00:00	2007-03-12 12:00:00	440078
9	2007-03-12 12:00:00	2007-03-12 13:00:00	440265
10	2007-03-12 13:00:00	2007-03-12 14:00:00	440042
11	2007-03-12 14:00:00	2007-03-12 15:00:00	440029
12	2007-03-12 15:00:00	2007-03-12 16:31:33	665800

Figure 4-6 Search

4.2.2 Download

You can select one or more files in the search result column to download to your local PC. During download procedure, you can refer to progress bar. See Figure 4-7.

The screenshot shows the download interface with the following components:

- Result Table:** The same table as in Figure 4-6, showing search results.
- Buttons:** Download and Cancel.
- Progress Bar:** A horizontal bar at the bottom of the window, currently showing 0% progress.

SN...	Start time	End time	File Size (KB)
1	2007-03-12 05:00:00	2007-03-12 06:00:00	440119
2	2007-03-12 06:00:00	2007-03-12 06:46:15	339267
3	2007-03-12 06:46:15	2007-03-12 07:00:00	100945
4	2007-03-12 07:00:00	2007-03-12 08:00:00	440050
5	2007-03-12 08:00:00	2007-03-12 09:00:00	440140
6	2007-03-12 09:00:00	2007-03-12 10:00:00	440198
7	2007-03-12 10:00:00	2007-03-12 11:00:00	440093
8	2007-03-12 11:00:00	2007-03-12 12:00:00	440078
9	2007-03-12 12:00:00	2007-03-12 13:00:00	440265
10	2007-03-12 13:00:00	2007-03-12 14:00:00	440042
11	2007-03-12 14:00:00	2007-03-12 15:00:00	440029
12	2007-03-12 15:00:00	2007-03-12 16:31:33	665800

Figure 4-7 Download

4.2.3 Playback

In the search result interface, there are two ways for you to play back video.

- Select file name and then click playback button.
- Double click file name

The playback interface is shown as below. See Figure 4-8.

In player interface, there are following items:

- 1: Frame rate. There are nine options: 1f/2f/3f/6f/12f/25f/50f/75f/100f, You can click corresponding pane to select.
- 2: Play
- 3: Pause
- 4: Stop
- 5: Start record
- 6: Previous file
- 7: Backward

- 8 Forward
- 9 Next file
- 10: Capture: Here is for you to snapshot important image.
- 11: Sound: + is to increase volume, - is to decrease volume. Click icon "🔊" to turn on or off volume.
- 12: Current frame rate: Here you can view current frame rate.
- 13: Current status: Here you can view play status bar, play mode and volume status (on or off).
- 14: Convert to AVI: System can convert the video file of suffix name such as mp4, Dav, mpeg, 264 to avi format.
- 15: Full-screen: There are two ways: click full-screen button to review in full-screen mode. The other way is to double click current window to review in full-screen.
- 16: Play mode: shuffle or repeat.
- 17: Change language: The player supports two languages: English/Chinese. System pops up dialogue box asking for restarting. Click OK, system automatically restart.
- 18: Parameter setting. You can set parameter setup/.

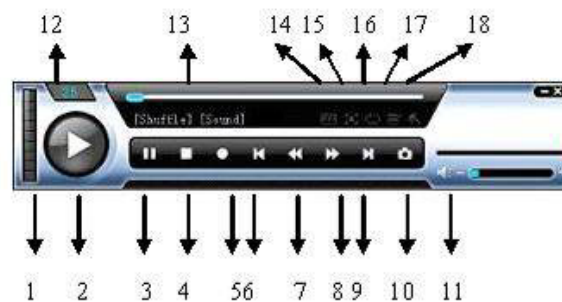


Figure 4-8 Playback

4.3 Device

Click device button, the image is shown as below. See Figure 4-9.

There are five items:

- Information
- Configuration
- Upgrade
- Control Record
- User Management

4.3.1 Information

Information interface is shown as in Figure 4-9. Here you can view device information.

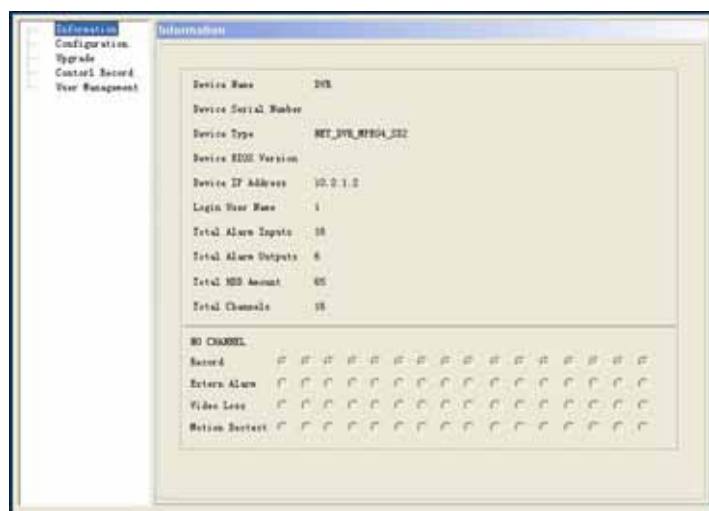


Figure 4-9 Device

4.3.2 Configuration

Click configuration, the interface is shown as in Figure 4-12.

You can see there are two items: device configuration and setting.

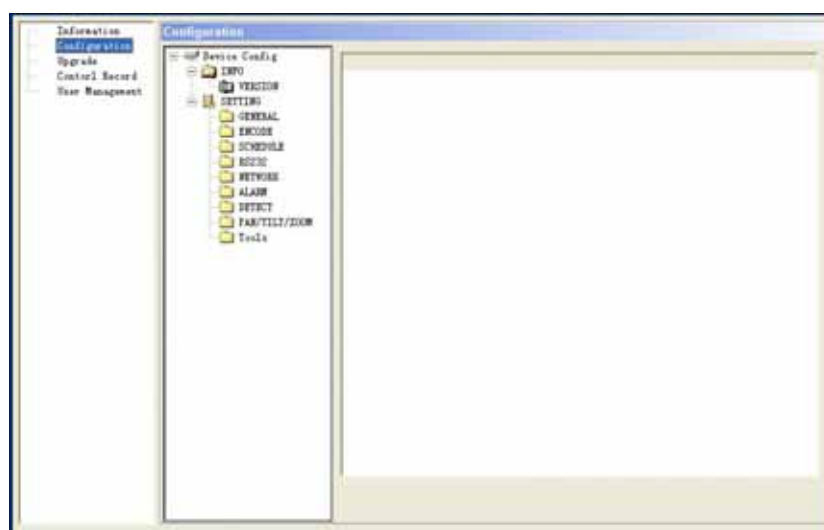


Figure 4-10 Configuration

4.3.2.1 Device configuration

Click device configuration, you can see system hardware and software version information. See Figure 4-11.

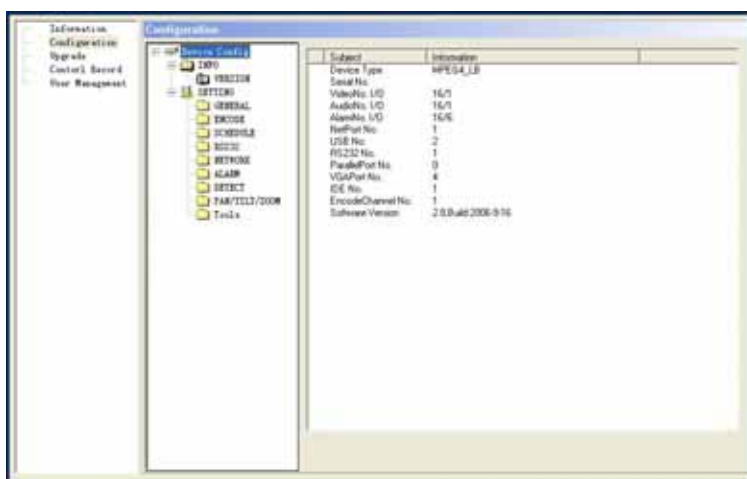


Figure 4-11 Device Configuration

4.3.2.2 General

Click general button, here you can set device time, time format and etc. See Figure 4-12.

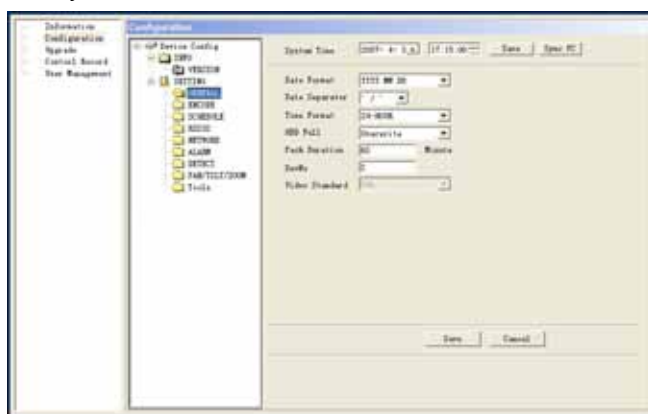


Figure 4-12 General setup

4.3.2.3 Encode

Click encode set, the image is shown as below. See Figure 4-13.

Here you can select channel number from the dropdown list and then set frame rate, resolution and etc.

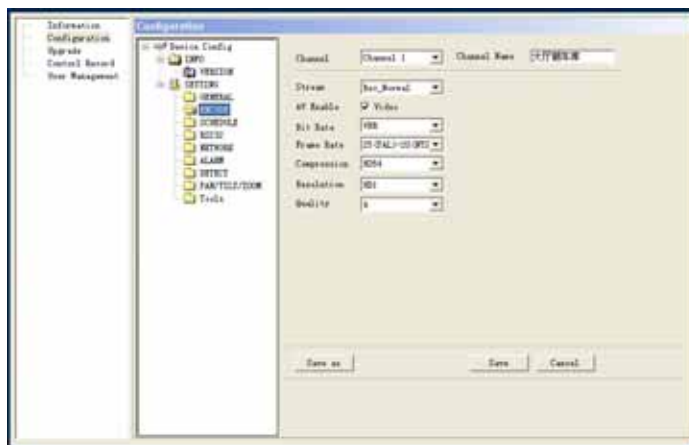


Figure 4-13 Encode

4.3.2.4 Schedule

Click schedule button, the image is shown as below. See Figure 4-14.
Here you can select channel number and then set period.

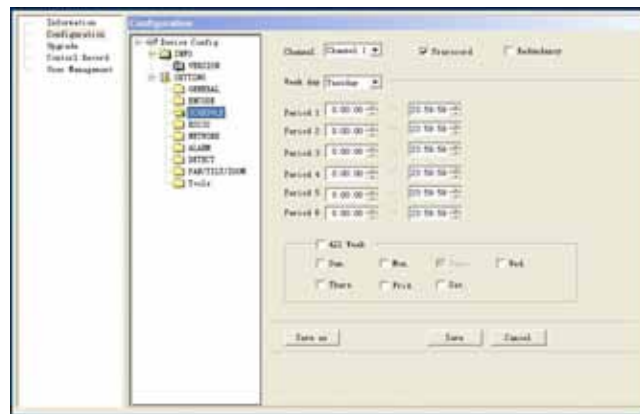


Figure 4-14 Schedule

4.3.2.5 RS232

Click RS232 button, you can set data bit, stop bit baud rate parity and etc. see Figure 4-15.

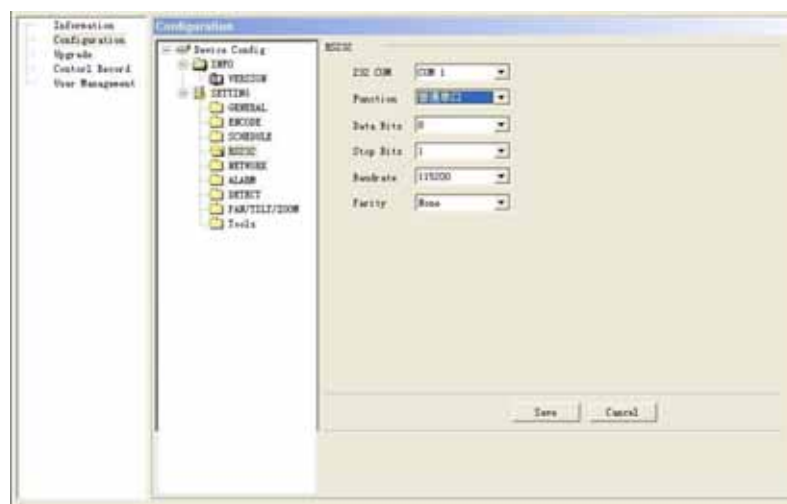


Figure 4-15 RS232

4.3.2.6 Network

Click network button, you can set IP address, subnet mask, gateway and etc. see Figure 4-16.

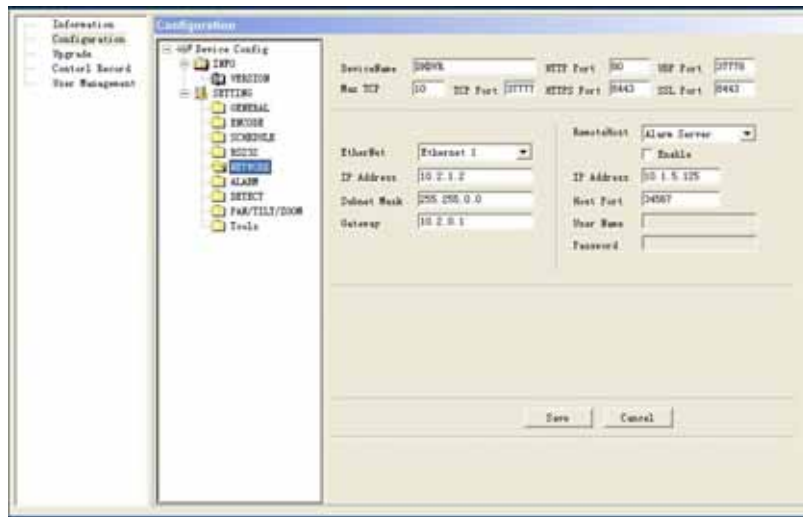


Figure 4-16 Network

4.3.2.7 Alarm

Click alarm button, the image is shown as in blow. See Figure 4-17.
Here you can set alarm channel, alarm type and etc.

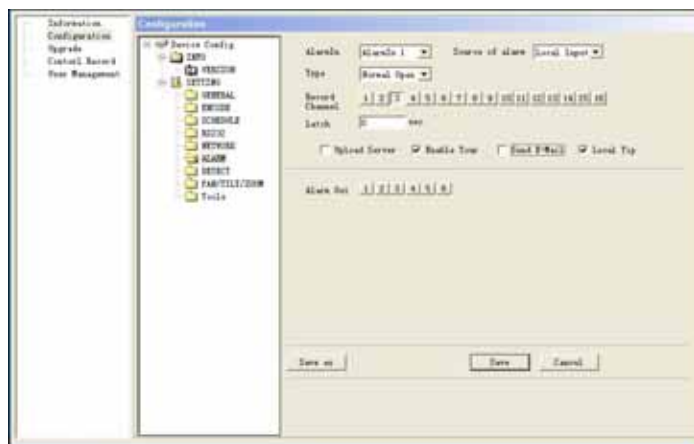


Figure 4-17 Alarm in

4.3.2.8 Detect setup

Click detect button, system pops up the following interface. See Figure 4-18.
Here you can set motion detection type, motion detection region, sensitivity and etc.

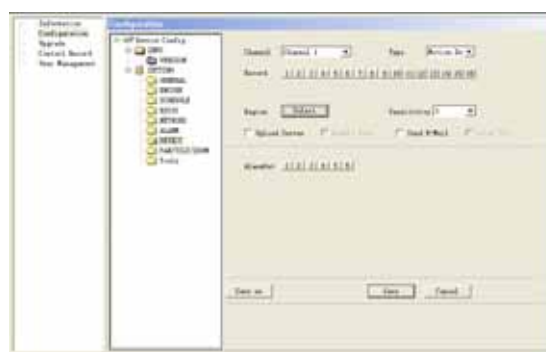


Figure 4-18 Detection setup

In Figure 4-18, click select button, the image is show as in Figure 4-19

You can drag your mouse in the screen to set motion detection section. The blue zone is motion detection section.

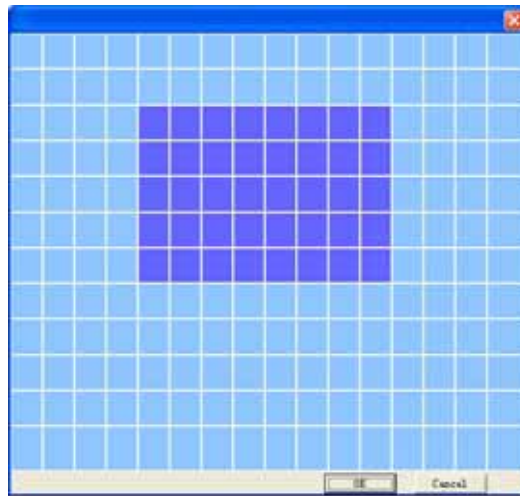


Figure 4-19 Motion Detection Region

4.3.2.9 PTZ

Click pan/tilt/zoom button, the image is shown as below. See Figure 4-20.

Here you can set PTZ information such as protocol, address and etc.



Figure 4-20 PTZ

4.3.2.10 Tools

Click tools button, the image is shown as below. See Figure 4-21.

Here you can view system directory and load or save system configuration.

Click save configuration button, you can save current system setup into a file (extension name CFG).

Or you can click load configuration button to load a configuration file.

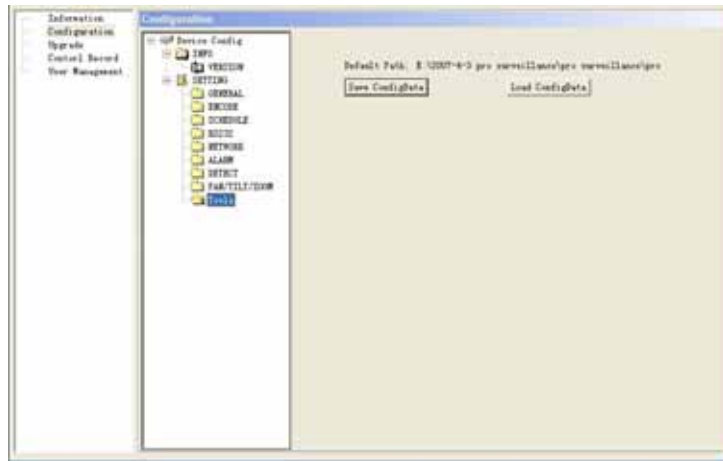


Figure 4-21 Tools

4.3.3 Upgrade

Click upgrade button, the image is shown as in Figure 4-22.

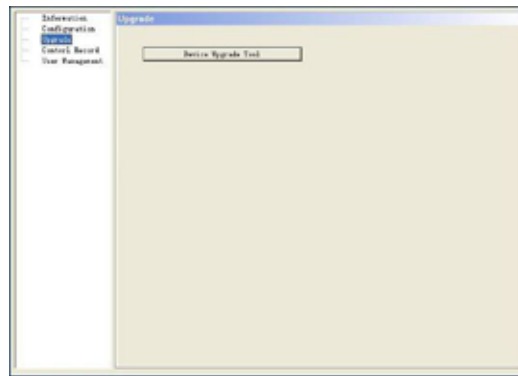


Figure 4-22 Upgrade

Click device upgrade tool, system pops up the following interface. See Figure 4-23.

You can select upgrade file and then click send button to begin upgrade.

Please note open the file button is invalid if there is no connected device.



Figure 4-23 Open file.

4.3.4 Control Record

Click control record button, the system pops up the following interface. See Figure 4-24. You can select one device on you right side, and then select corresponding record type.

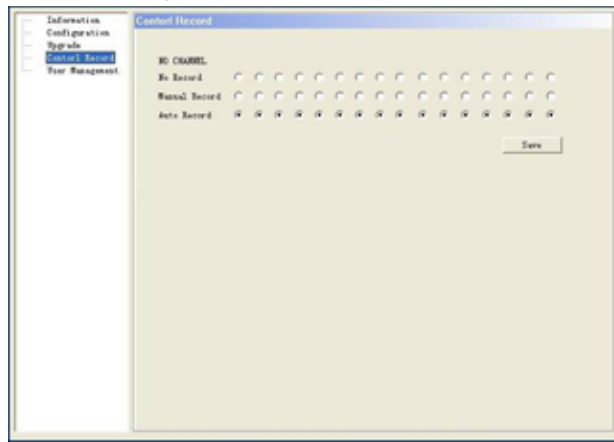


Figure 4-24 Record management

4.3.4.1 User Management

Click user management button, system pops up the following interface. You can add /delete user (group) or modify its corresponding password. See Figure 4-25.

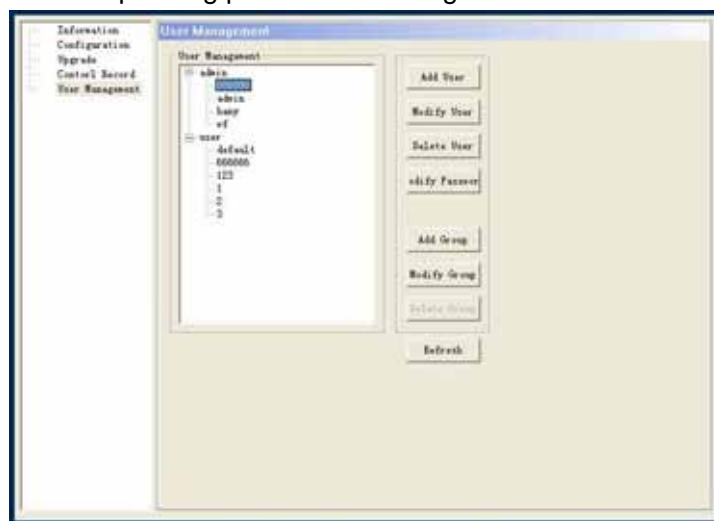


Figure 4-25 User management

4.4 System

Click system button, the image is shown as below. See Figure 4-26.

4.4.1 Local record

Local record interface is shown as below. You can modify record video backup path and file size. See Figure 4-26.

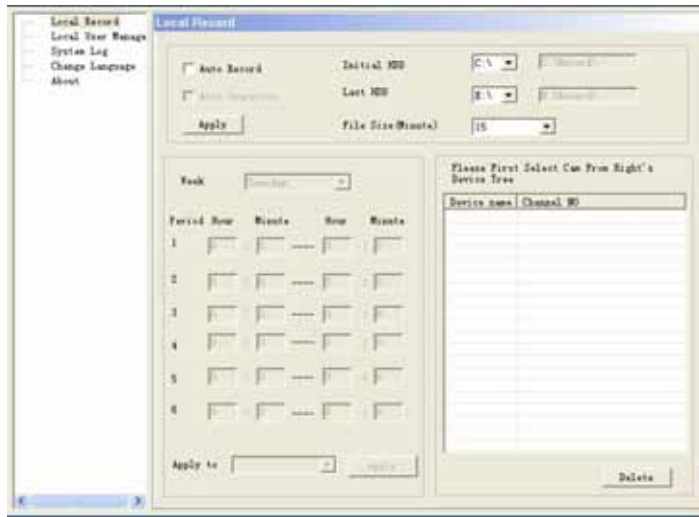


Figure 4-26 System

4.4.2 Local User Manager

Click local user manager, you can see the following interface. See Figure 4-27.

Local user manager consists of four items: monitor/net playback/local control/remote control/user right.

You can select one device and then draw a before the checkbox to enable corresponding function.

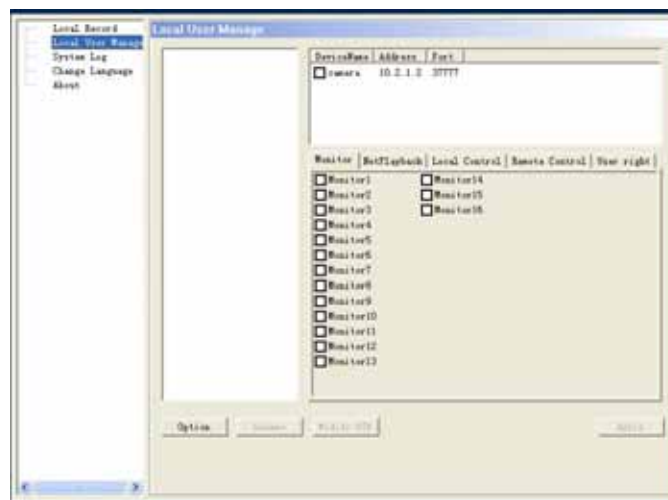


Figure 4-27 Local Use Manager

4.4.3 System log

Click system log button, you can view system log information. See Figure 4-28.

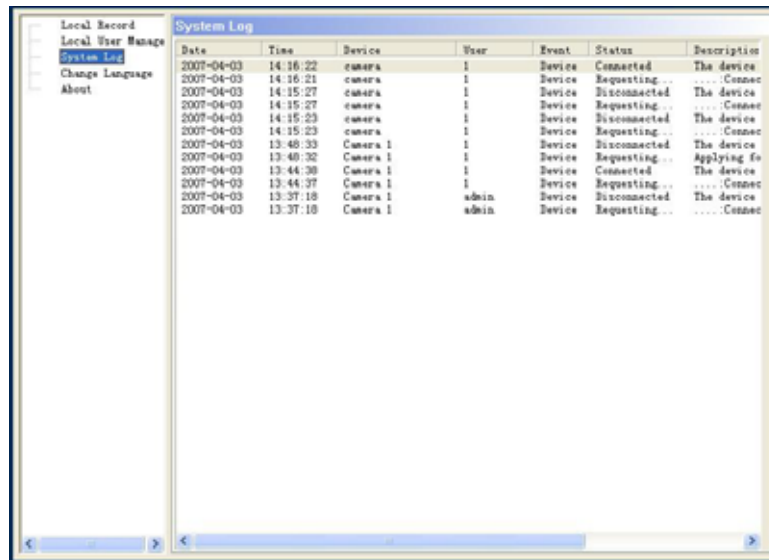


Figure 4-28 Log

4.4.4 Change Language

Click change language button, you can see the following interface. See Figure 4-29.

Select your desired language and then click OK.

System needs to reboot to get modification activated.

You can see the corresponding warning message.

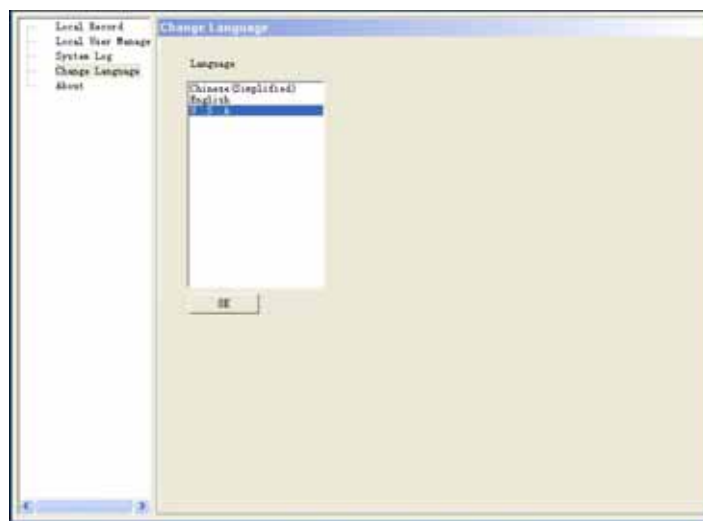


Figure 4-29 Change Language

4.4.5 About

Click about button, the image is shown as below. See Figure 4-30.

Here you can view system version information.

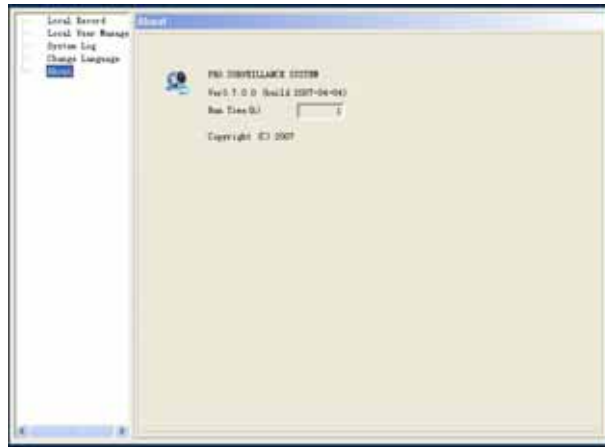


Figure 4-30 About

4.5 E-map

Click e-map button, you can see the following interface. There are four sections: preview section, map list section-map section and.

At the bottom of the interface there are five function buttons: edit, map, picture, picture edit and save.

See Figure 4-31.



Figure 4-31 E-map Main Window

Please note you need to draw a before edit check box to enable map, picture and picture edit function!

4.5.1 Add an e-map

Click picture edit button in Figure 4-31, system pops up background picture manager interface. See Figure 4-32. You can click add button to add a picture into the map.

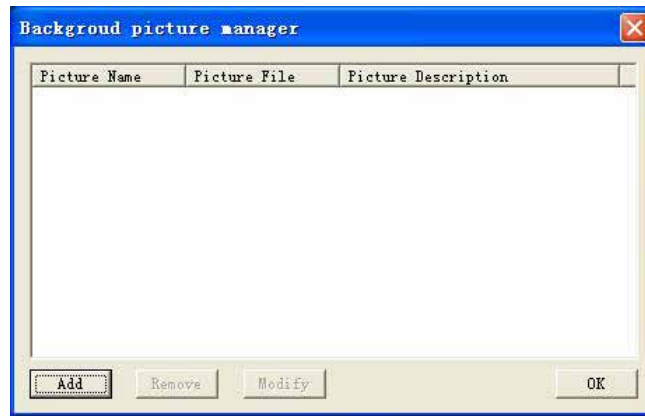


Figure 4-32 Background Picture Manager

Click add button, you can see Figure 4-33.

Here you can click browser button to select picture and then input picture name and description.

Click OK to finish operation.

Repeat the procedure here you can add more pictures.

Finally, you can go to map list section to check newly added maps.



Figure 4-33 Add an E-map

4.5.2 Remove an E-map

In background picture manager interface (Figure 4-32), select one picture and then click remove button. System pops up warning dialogue box asking your confirmation. Click Yes button to remove current e-map.

4.5.3 Modify an E-map

In background picture manager interface (Figure 4-32), select one picture and then click modify button.

System pops up e-map property dialogue box (just the same as Figure 4-33).

Now you can modify e-map property.

Tip:

In background picture manager interface (Figure 4-32) you can double click one picture name to modify its property.

4.5.4 E-map Operation

Click picture button, left click picture name and then drag it into e-map section.

You can see an interface as in Figure 4-34.

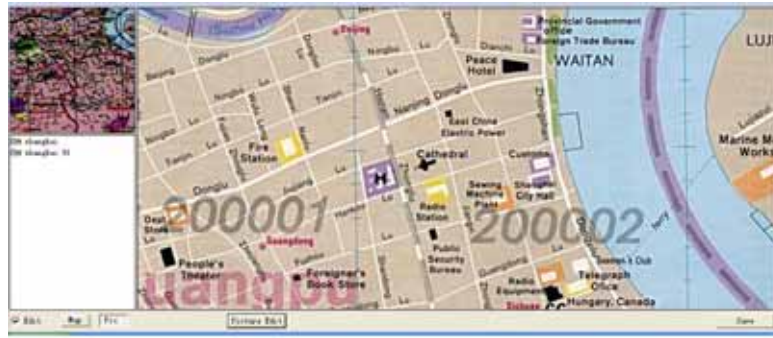


Figure 4-34 E-map

4.5.5 Device Operation

You can see newly added e-map in map list.

Click map button and then select the map you want to add device, double click device name on your right side.

Now there is a device icon in the map. You can drag it to your desired location on the map.

You can see there is a red icon in preview section to indicate current position. See Figure 4-35.

Please note when you continuously add devices, you need to properly deploy them one by one, because system place them in the same point initially.

System only displays devices deployed in the map so that you can easily identify devices are in the map or not.

Click save button to finish the operation.

Tip:

In the map preview section, drag rectangle cursor (green rectangle) to change map content in e-map section.



Figure 4-35 Add New Device

4.5.6 Open Device

After you added one device, double click camera icon in the map list.

You can enable device to go to real-time monitor mode.

For those inactivated devices, there is a red cross below the name.

4.5.7 Multiple E-maps Operation

You can add multiple sub-maps in one map. Please follow previous steps

4.5.8 Multiple Sub-e-maps Setup

You can follow the procedures below

- Open one map such as map1.
- Click picture button and drag map 2 to anywhere in map1.
- Click map button and click map 2 to open current map
- Double click device name on your right side to add one device to map 2.
- You can view newly added e-map and device list in the map list section.
- Click save button, now you have added one sub-map and its device.

You can repeat the procedures here to add more maps.

Tip:

You can use one device in several maps.

5 Appendix

AudioRecord.dll	Audio interface library
AudioRecordEx.dll	Audio interface enhanced library
decode.dll	Decode library
render.dll	Play library
dhdvr.dll	Network ground library
dhnetSDK.dll	Network interface layer
dhplay.dll	Soft decoder library
DhStreamParser.dll	Data stream analyzer
dllh264.dll	H.264 decoder library
ParaTimer.dll	Timer library
HWPlay.dll	Decode card interface library
dhtmman32.dll	Decode card driver library
dspdec.out	Decode card DSP library
Password.dll	Character string encryption library

Note:

Slight difference may be found in user interface.

All the designs and software here are subject to change without prior written notice.

Please visit our website for more information.